
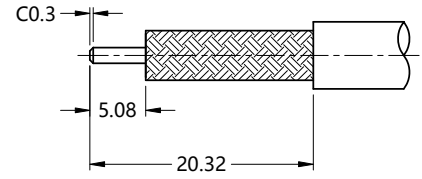


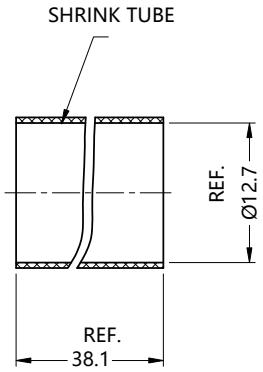
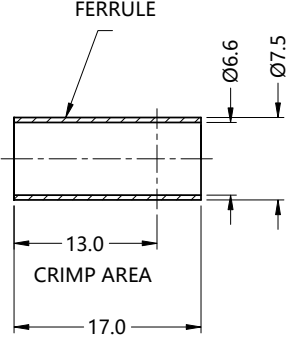
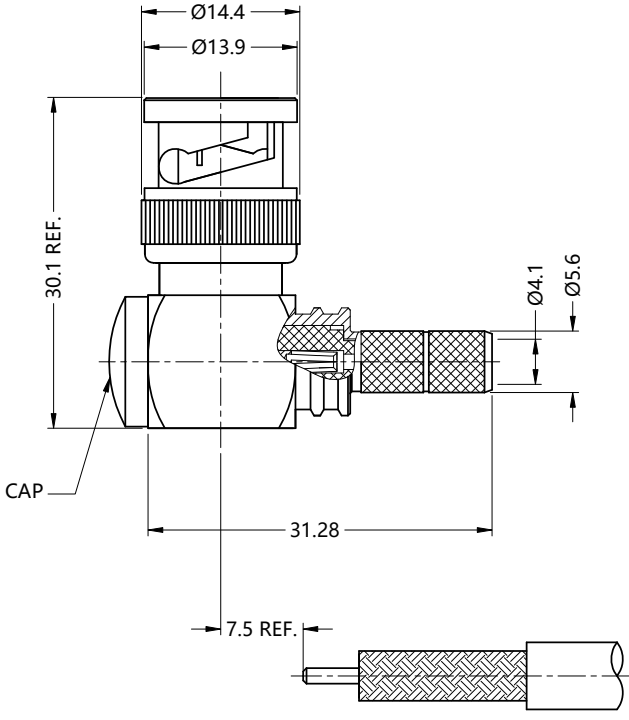
REV.	DESCRIPTION	ECN NO.	NAME	DATE	 ALL PARTS MUST MEET TO RoHS REQUIREMENTS
B0	UPDATED THE DRAWING	N/A	YWD	2017-11-06	
B1	NEW FRAME	N/A	Liu	2021-05-10	

NOTES:

1. CRIMPED FERRULE HEX. CRIMP SIZE .255"
2. CONTACT PIN TO CAPTIVE



RECOMMENDED CABLE STRIPPING DIM'S



MATERIALS AND PLATING		UNIT: MICRO-INCHES
PART NAME	MATERIALS	PLATING
BODY	BRASS C3604	ALBALOY 80 u"/COPPER
INSULATOR	PTFE ASTM-D-1710	N/A
CONTACT PIN	BRASS & Be-Cu C17300	GOLD 50 u"/NICKEL/COPPER
FERRULE	BRASS	ALBALOY 80 u"/COPPER
GASKET	SILICONE	N/A
SHELL	BRASS C3602	ALBALOY 80 u"/COPPER

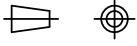
ELECTRICAL CHARACTERISTICS		
IMPEDANCE	50 Ω	
VOLTAGE RATING	250 V(rms)	
FREQUENCY RANGE	0 ~ 6 GHz	
DIELECTRIC WITHSTANDING VOLTAGE	> 750 V	
CONTACT RESISTANCE	CENTER CONTACT	< 1.5 mΩ
	OUTER CONTACT	< 0.2 mΩ
INSULATION RESISTANCE	> 5000 MΩ	
INSERTION LOSS	0.1X √f GHz	
RF-LEAKAGE	N/A	
VSWR	< 1.35	

MECHANICAL CHARACTERISTICS	
FORCE TO ENGAGE AND DISENGAGE	N/A
CENTER CONTACT RETENTION FORCE	> 6 lbs
RECOMMENDED COUPLING TORQUE	N/A
COUPLING NUT RETENTION FORCE	> 100 lbs
DURABILITY	> 500 cycles

ENVIRONMENTAL PARAMETER	
TEMPERATURE RANGE	-40 °C ~ +125 °C
CORROSION RANGE	MIL- STD 202, Meth. 101, Cond. B
VIBRATION	MIL- STD 202, Meth. 204, Cond. B
SHOCK	MIL- STD 202, Meth. 213, Cond. G
CLIMATIC CLASS	IEC 60068 65/165/21

* CUSTOMER OUTLINE DRAWING

UNLESS OTHERWISE SPECIFIED:
 1) EDGES : C0.15 MAX ;
 2) REMOVE ALL BURRS ;
 3) SURFACE ROUGHNESS : Ra1.6 ;
 4) UNITS : mm ;
 5) DIMENSIONS TOLERANCES
 DECIMALS : .x ±0.3 .xx ±0.2 .xxx ±0.1;
 ANGLES : ± 5°.

THIRD ANGLE PROJECTION		
APPROVED :	CUSTOMER P/N :	-
CHECKED :	SCALE :	3 : 2
DRAWING :	DATE :	2021-05-10
PAGE : 1/1		



TITLE : BNC MALE S/T CRIMP FOR LMR-240 CABLE, 50Ω

DRAWING NO. : 5BNM11R-A46-001

COMPANY WEBSITE : www.slkcorp.com

CUSTOMER OUTLINE DRAWING