
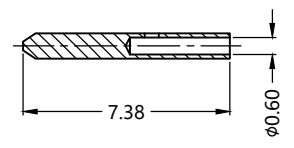
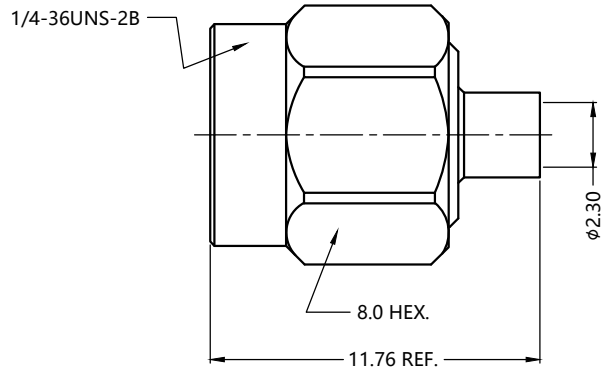
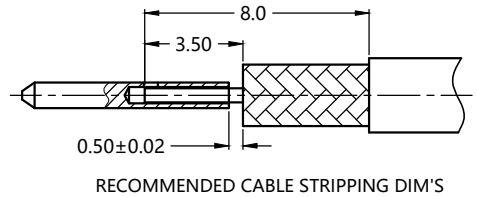



1	2	3	4	5	6
REV.	DESCRIPTION	ECN NO.	NAME	DATE	 ALL PARTS MUST MEET TO RoHS REQUIREMENTS
0	FIRST EDITION	N/A	SYH	2020-07-14	



MATERIALS AND PLATING			UNIT: MICRO-INCHES		ELECTRICAL CHARACTERISTICS	
PART NAME	MATERIALS	PLATING				
BODY	STAINLESS STEEL 303Cu	GOLD PL.3u"/NICKEL			IMPEDANCE	50 Ω
INSULATOR	PTFE ASTM-D-1710	N/A			VOLTAGE RATING	175 V(rms)
CONTACT PIN	Be-Cu C17300	GOLD PL.30u"/COPPER			FREQUENCY RANGE	DC ~ 26.5 GHz
GASKET	SILICONE	RED			DIELECTRIC WITHSTANDING VOLTAGE	>500 V
SHELL	STAINLESS STEEL 303Cu	PASSIVATION			CONTACT RESISTANCE	CENTER CONTACT <3.0 mΩ OUTER CONTACT <2.0 mΩ
					INSULATION RESISTANCE	>5000 MΩ
					INSERTION LOSS	According to the cable
					VSWR	<1.25 @ DC ~ 18 GHz <1.30 @ 18 ~ 26.5 GHz
					3RD INTERMODULATION	N/A
MECHANICAL CHARACTERISTICS						
FORCE TO ENGAGE AND DISENGAGE				N/A		
CENTER CONTACT RETENTION FORCE				N/A		
RECOMMENDED COUPLING TORQUE				7 ~ 10 in-lbs		
COUPLING NUT RETENTION FORCE				60 lbs MIN.		
DURABILITY				>500cycles		
			ENVIRONMENTAL PARAMETER			
			TEMPERATURE RANGE		-55°C ~ +125 °C	

CUSTOMER OUTLINE DRAWING

* CUSTOMER OUTLINE DRAWING			THIRD ANGLE PROJECTION		
UNLESS OTHERWISE SPECIFIED: 1) EDGES : C0.15 MAX ; 2) REMOVE ALL BURRS ; 3) SURFACE ROUGHNESS : Ra1.6 ; 4) UNITS : mm ; 5) DIMENSIONS TOLERANCES DECIMALS : .x ±0.3 .xx ±0.2 .xxx±0.1; ANGLES : ± 5°.			APPROVED :	CUSTOMER P/N :	
			CHECKED :	SCALE :	
			DRAWING :	DATE :	
				PAGE : 1/1	
			TITLE :		SMA MALE S/T SOLDER FOR Nband-280/Tflex-405 CABLE
			DRAWING NO. :		5MAM15S-A82-039
			COMPANY WEBSITE :		www.slkcorp.com